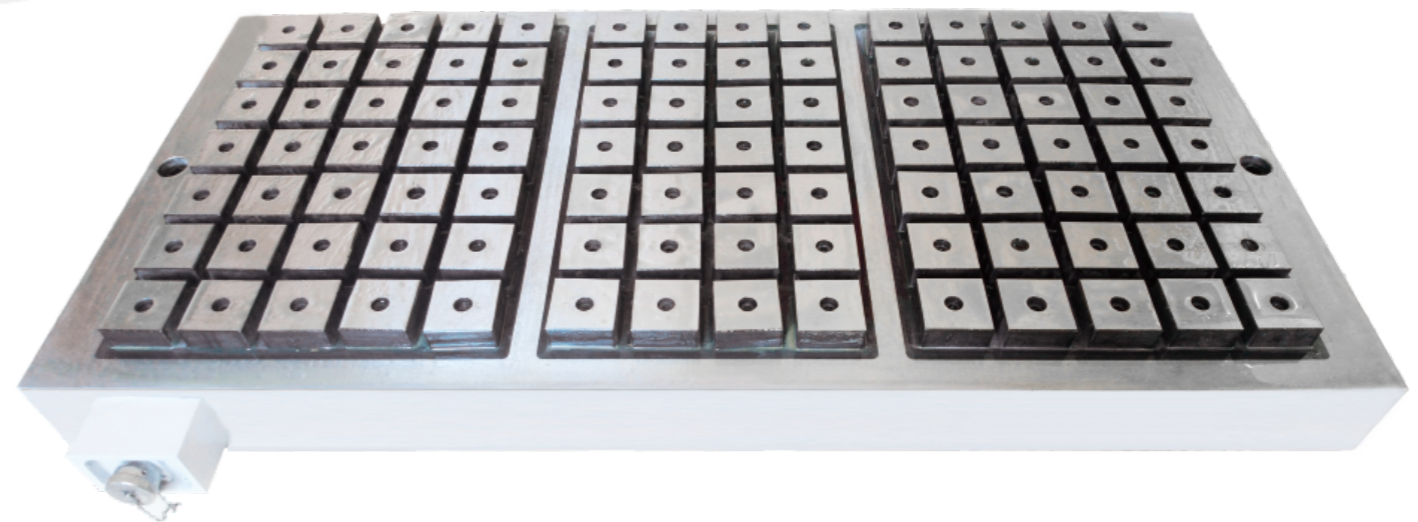
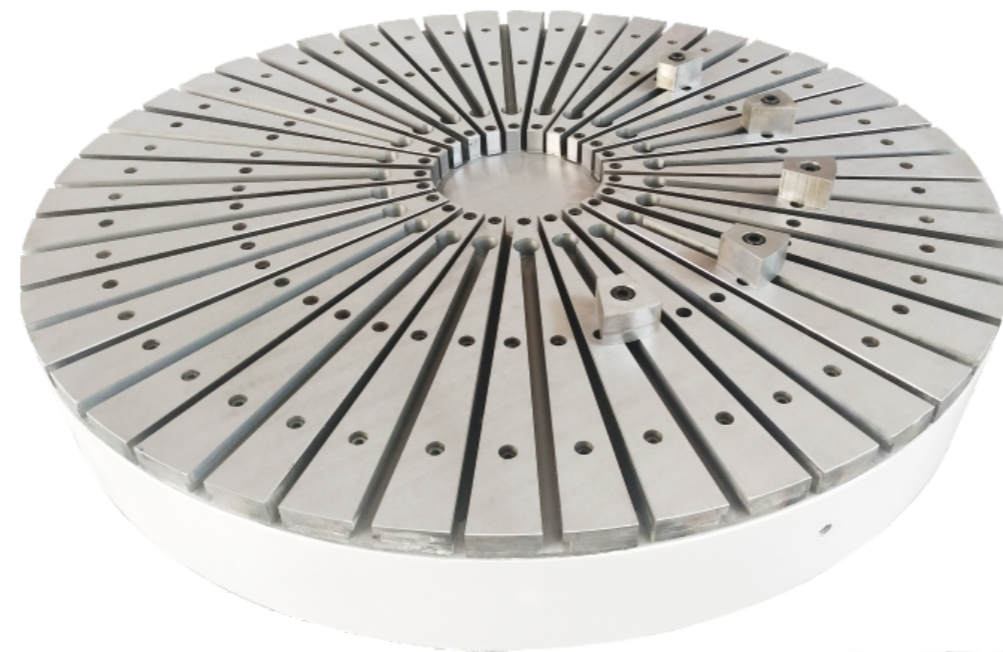


STUBBORN

MAGNETIC CHUCKS



CATALOGUE

01-05 MACHINE TYPE ELECTRIC PERMANENT MAGNETIC CHUCK

06-09 MAGNETIC FORMWORK - RAPID MOLD CHANGE SYSTEM

10 VACUUM CHUCK

11-15 ELECTROMAGNETIC CHUCK

11 GRINDING WITH STANDARD ELECTROMAGNETIC CHUCK

11 GRINDING WITH FINE ELECTROMAGNETIC CHUCK

12 MEDIUM ELECTRIC MAGNETIC CHUCK

13 ROUND TABLE ELECTROMAGNETIC CHUCK

13 GRIND MULTI-FUNCTION POWERFUL ELECTROMAGNETIC SUCKER

14 POWERFUL ELECTROMAGNETIC CHUCK FOR MILLING MACHINE

15 ROTATING ELECTROMAGNETIC CHUCK

15 SPECIAL ELECTROMAGNETIC SUCKER FOR GRINDING MACHINE

16-24 PERMANENT MAGNETIC CHUCK

16 SUPER POWERFUL PERMANENT MAGNETIC CHUCK (CNC SPECIAL)

17 POWERFUL PERMANENT MAGNETIC CHUCK - SQUARE TYPE

19 POWERFUL DENSE PERMANENT MAGNETIC CHUCK

20 CIRCULAR DENSE PERMANENT MAGNETIC CHUCK

20 THE RADIATION POLE IS A PERMANENT MAGNET

21 ULTRA-THIN PERMANENT MAGNETIC CHUCK

25-26 ELECTROMAGNETIC CHUCK

25 PERMANENT MAGNET LIFTER

26 AUTOMATIC PERMANENT MAGNET LIFTER

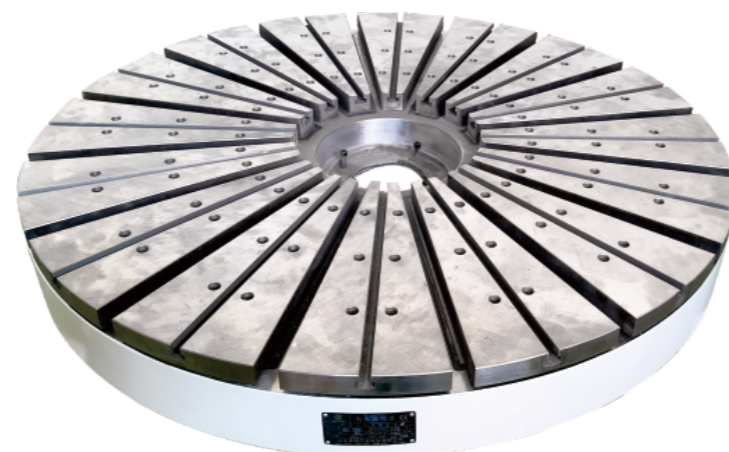
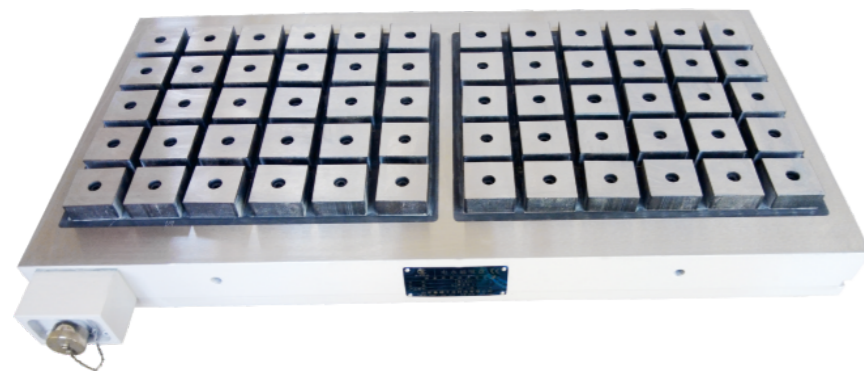
MACHINE TYPE ELECTRIC PERMANENT MAGNETIC CHUCK

Product overview

The electric permanent magnet chuck is a revolutionary magnetic clamping tool in the field of machining, designed for the use of metal cutting fixture (such as turning, milling, grinding, planing, drilling, etc.), both efficient and accurate. It is not only suitable for ordinary machine tools, but also can meet the strict requirements of high-end CNC equipment such as CNC machining center. As the upgrade product of electromagnetic chuck and permanent magnet chuck, the electric permanent magnet chuck has become the ideal fixture choice for modern intelligent manufacturing with its advantages of stable adsorption, safety and energy saving, convenient operation and so on. Electric permanent magnet suction cups are promoting the machining industry to high efficiency and intelligence, helping enterprises to improve production efficiency and product quality.

The wide range of applications of electric permanent magnet suckers is continuing to cover the following industries:

1. Precision manufacturing field: mold processing, bearing manufacturing, engineering machinery, optical devices, semiconductor equipment, wafer cutting machines, packaging mold positioning clamping.
2. Modern industrial field: automobile manufacturing, home appliance automation production line, rail transit, energy equipment, ship construction and other large workpiece milling and welding fixing.
3. Emerging technology fields: intelligent terminal processing, plastic product molding, 3D printing, medical equipment, robot manufacturing and other flexible clamping and assembly.
4. High value-added industries: aerospace, electronic communications, jewelry watches, national defense and other parts of the security fixed and ultra-precision processing.



Main features of product

Powerful suction, intelligent control

The electric permanent magnet chuck can produce up to 16kg/cm² super suction force, durable stable magnetic force does not decay, uniform distribution of magnetic force lines, to achieve the perfect adsorption of 100% contact surface between the mold and the chuck; Magnetic force line intelligent control, never penetrate the surface of the workpiece, completely eliminate the risk of magnetizing tools and machine tool spindle, perfectly maintain processing accuracy, smooth chip removal without interference.

Save power, secure clamping

The electric permanent magnet chuck is only switched on at the moment of clamping/release (0.6-3 seconds), saving more than 95% of energy than the traditional electromagnetic chuck. When clamping, it completely relies on permanent magnetic force to adsorb the workpiece, completely eliminate the risk of power failure and demagnetization, and eliminate the hidden danger of the power failure workpiece falling off, and the processing is safer.

Simple operation and high efficiency

It is equipped with special control buttons, which can independently complete the clamping and releasing of the workpiece. When used with the magnetic conductive block, it can be used for five-sided machining, drilling, tapping, milling, forming and processing at one time, reducing repeated positioning, and increasing the clamping efficiency by 90%. When the workpiece is released, it is automatically demagnetized, and the medium and low carbon steel material reaches zero remanence, without the use of demagnetization device.

Good shock resistance and high precision

The electro-permanent magnetic chuck provides full-surface support and clamping, delivering exceptional rigidity and vibration resistance for high-speed cutting while extending tool life by over 30%. Its intelligent leveling technology eliminates workpiece deformation and stress rebound, enabling multi-surface machining in a single setup with ultra-high precision.

Maintenance-free, no pollution

The electro-permanent magnetic chuck features a fully sealed design with no moving parts, heat generation or consumables. With outstanding corrosion/impact resistance, it requires zero maintenance and guarantees a clean, pollution-free working environment.

Save space

The electric permanent magnet chuck breaks through the clamping space limit, supports the workpiece size \geq work surface, and realizes the maximum processing range!

Application case



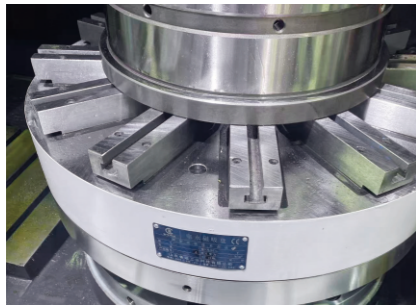
Vertical gantry machining center



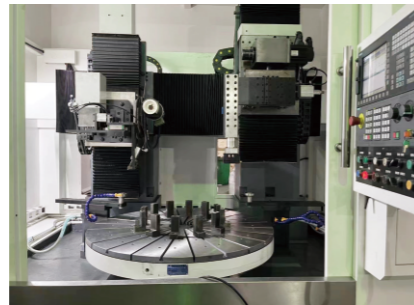
Vertical CNC machining center



Horizontal CNC machining center



Vertical machining



Vertical machining



Sleeper machining



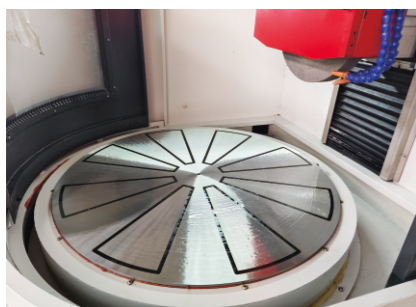
Milling of rail points



Linear guide milling



Milling machine machining milling



Round table surface grinding machine grinding



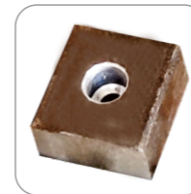
Gantry milling



Self-centering vertical grinding

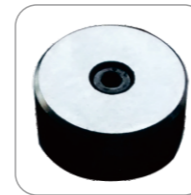
Different types of magnetic permeability blocks

Fixed magnetic conductive block



Square fixed magnetic conductive block

Model	Site	Height
H50-50	50*50	50
H70-70	70*70	70



Circular fixed magnetic conductive block

Model	Site	Height
CH50-50	Φ50	50
CH70-70	Φ50	70

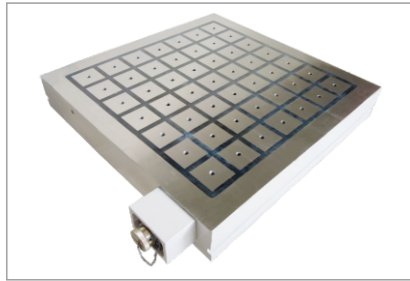
Elastic magnetic block



1. The complete pole extension block consists three fixed blocks and several elastic blocks.
2. He maximum magnetic field is supported by three fixed blocks to make the baseline in the same level.
3. The rest area could be adjusted to adapt to the level of workpiece by sliding up and down the elastic blocks to provide larger magnetic force.
4. Magnetic pole specifications: 50x50 70x70 Height: 25/30/50/70 can be customized according to customer requirements.

Product configuration

Standard configuration



Electric permanent magnet chuck



Charge demagnetization controller



Power cord



Aviation plug



Clamp screw

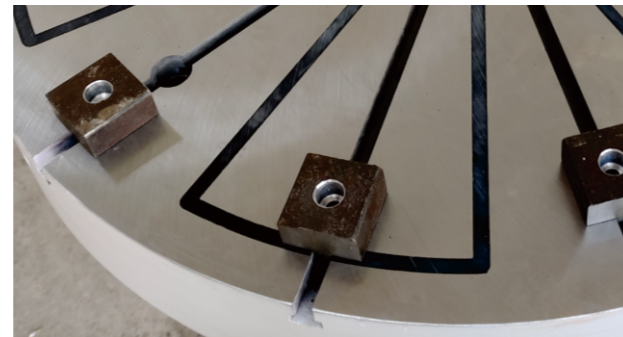


PLC cable - Controller cable

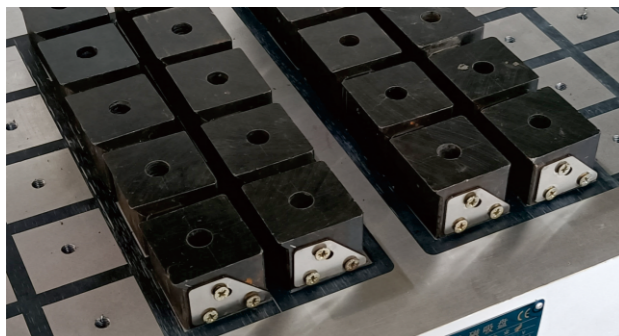
Assorting



Circular fixed magnetic conductive block



Square fixed magnetic conductive block



Elastic magnetic block

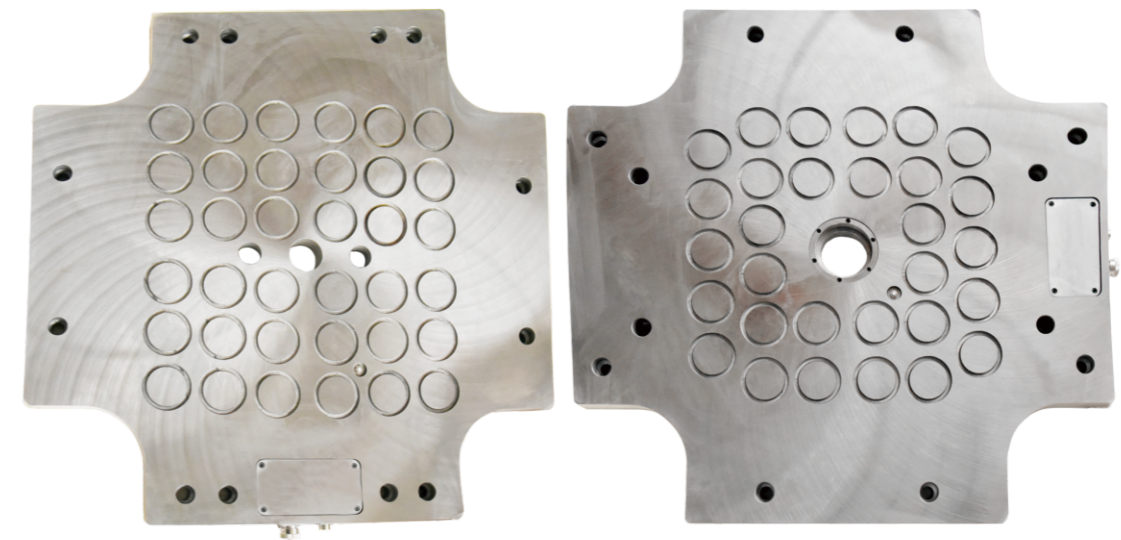


Manual operator

MAGNETIC FORMWORK - RAPID MOLD CHANGE SYSTEM

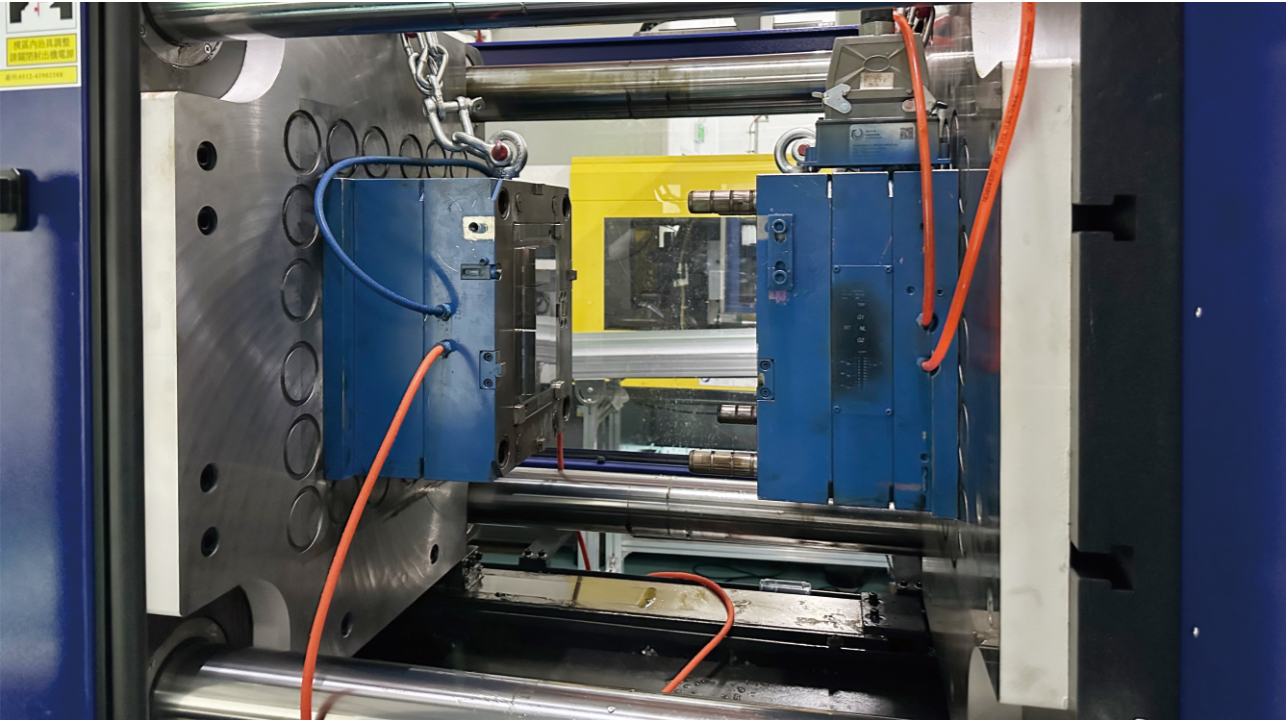
Product overview

Electro-permanent magnet formforms-rapid mold change system adopts unique dual magnetic source technology, loading and unloading mold after 3 seconds of power, 160N/cm² super magnetic absorption, with modular design to achieve automatic positioning, and mold closing surface uniform force, one minute to complete mold change, efficiency increased by 80%. Zero energy consumption operation, mold closing accuracy of $\pm 0.01\text{mm}$, magnetic annual attenuation < 3%, suitable for 50-4000 tons of the full series of injection molding machine, magnetic template is simple, fast, mold versatility is high, completely bid farewell to the bolt mold locking trouble. Upgrade immediately and enjoy the intelligent production experience of "second mold change and zero waiting"!



Application field

Widely used in automotive manufacturing (injection/battery module packaging), aerospace (titanium alloy thermoforming), electronic manufacturing (5G ceramic pressing), new energy (lithium battery pole die cutting), plastic processing equipment (monochrome/two-color/multi-group injection molding machine, clean injection molding system, multi-cavity die/hot runner), metal forming equipment (cold/hot chamber die casting machine, high-speed stamping machine), compound Composite material manufacturing (molding machine, sheet molding machine), precision processing equipment (laser cutting compounding machine, CNC bending machine) and other industrial scenarios, suitable for injection molding machine, mold closing machine, parting machine, stamping machine, punch press and other high-precision molding equipment, to achieve $\pm 0.01\text{mm}$ positioning accuracy and energy-saving and efficient production.



Main features of product

The magnetic formform-Quick mold change system ADAPTS to a full range of injection molding machines and stamping machines to achieve fast fixed second-level mold replacement. The locking force evenly covers the whole contact surface, eliminating deformation and internal tension, extending the life of the mold by 30%, and increasing the product yield by 15%.

The magnetic attraction is strong

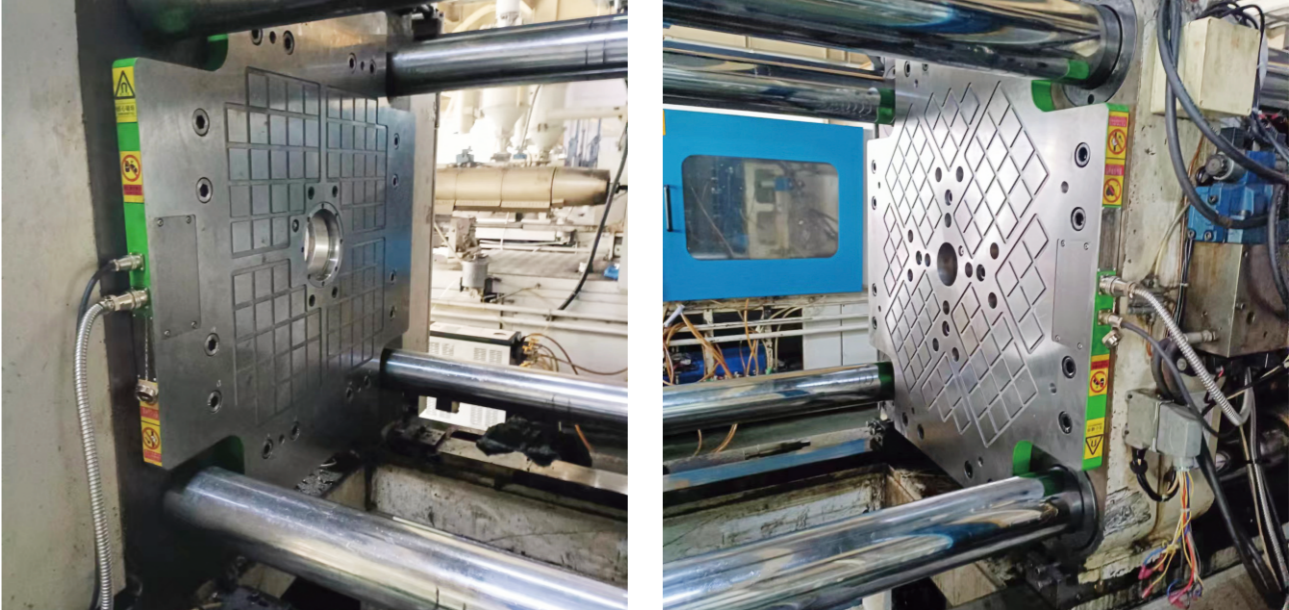
Magnetic force can reach 16kg/cm² constant magnetic force, concentrated targeting magnetic technology to achieve micron-level pressure distribution, no attenuation lasting uniform locking, eliminate mold deformation risk, ensure process stability, performance beyond the traditional clamping scheme 30%!

Maintenance-free

Mold delivery speed, support ultra-scale (> wall panel size) accurate clamping; No mechanical transmission parts design to achieve system maintenance free, zero oil pollution emission environmental protection certification, no use of mold peripheral equipment such as pressure plate, layout reduced by 80% operation and maintenance complexity, easier operation, meet the production needs of the whole scene of multiple industries.

High safety performance

Pulsed power supply technology, charging demagnetization only 1-3 seconds instantaneous energy consumption, static self-holding magnetic no standby power; Integrated triple safety monitoring of distance ±0.1mm laser positioning, closed-loop temperature control (±2°C accuracy) and dynamic verification of magnetic pole position. The second-level mold switching technology maintains the temperature control stability of the hot mold, reduces the injection cycle by 15%, reduces the waste rate by 18%, and ensures that every step from mold change to production is safe and reliable.



Power off without losing magnetism. Electricity is just control, relying on permanent magnets to absorb the mold



Easy to operate - only one person can operate without any tools



Strong suction - more than 160N per square centimeter



Safe and reliable -8 large detection system, real-time to ensure safe operation



Improve efficiency -3 minutes magnetic, can complete the loading and unloading mold



Energy saving - Only the use of electricity when replacing the mold, power can not be lost



Quick installation - Thinner disk thickness, easy to install and save die travel



Strong applicability - Mold style, no matter the size of the mold can be used

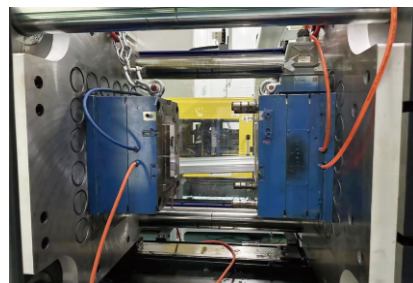


Widely used - injection molding machines, stamping machines, etc. can be installed when there is a need for mold change

Eight safety protection measures

- 1. Mold close inspection:**The magnetization operation should be started after the mold closing pressure and the template is tightly in place. The interlock control ensures that there is no foreign matter gap, so as to ensure the magnetic strength and operation safety.
- 2. Current strength detection:**Dynamic pulse current monitoring technology, millisecond accurate trigger charging demagnetization action, trigger success signal to ensure zero error magnetic suction execution.
- 3. Temperature alarm detection:**The temperature monitoring module monitors the working condition of the magnetic suction cup in real time. The overtemperature triggers the thermal failure protection mechanism, and the linkage injection molding machine stops and alarms to ensure the stability of the magnetic suction.
- 4. Distance sensing monitoring:**The distance detection sensor monitors the distance between the mold and the magnetic suction cup in real time (accuracy $\pm 0.05\text{mm}$). The charging and demagnetization operation can only be triggered when the contact is $\leq 0.2\text{mm}$, and the shutdown alarm is at the millisecond level when the limit is exceeded to ensure the magnetic safety threshold.
- 5. Magnetic flux detection:**In the magnetization stage, the trigger signal is monitored in real time after the magnetic strength reaches the standard. The injection molding process is dynamically monitored by multi-area redundant magnetic flux sensors, and the fault shutdown is triggered by a small attenuation (accuracy $\pm 0.5\%$), so as to realize closed-loop safety control of the magnetization and production process.
- 6. Mold error detection:**Real-time monitoring of $\pm 0.05\text{mm}$ displacement in injection state, millisecond triggering of fault shutdown interlock, ensuring zero displacement deviation safety control in the production process.
- 7. Interlock control detection:**Magnetization standard + key lock + multi-sensor self-test triple interlock, any abnormal condition triggers millisecond emergency stop and alarm to ensure zero misoperation of injection molding operation.
- 8. Key switch control:**The demagnetization operation adopts the "key switch + double button interlock" mechanism (demagnetization key + lock key must be pressed simultaneously), and the magnetic force control is automatically disabled in the injection state. The anti-miscontact design has passed the CE/ISO safety certification.

Application case



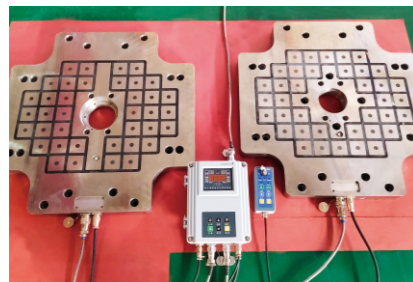
Injection molding machine



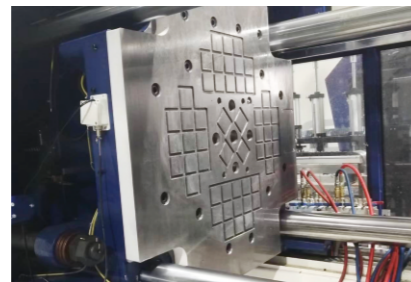
Molding press



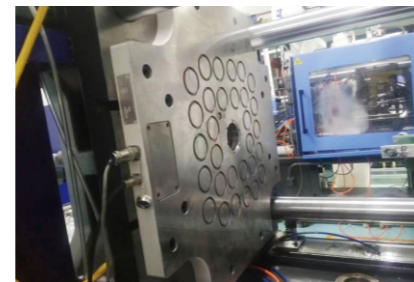
Punching machine



Roll-over machine



Parting machine



Closing machine

VACUUM CHUCK



Seal-free vacuum suction cup



Sealed vacuum suction cup

Product introduction

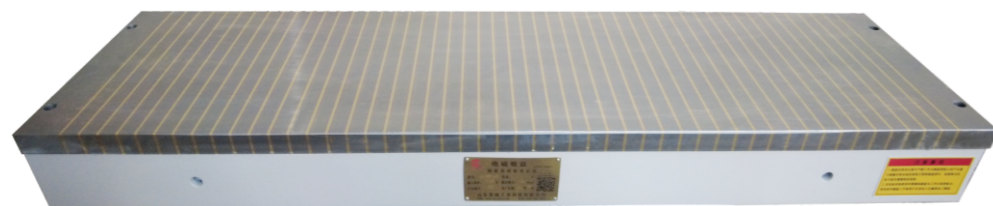
- This product does not need equipped with vacuum pump, just connect to conventional air compressor, any material can be fast strong adsorption of sheet metal (such as aluminum copper, stainless steel plate, rubber, glass, cardboard and other insulation board), iron plate, steel plate also can achieve very good effect on adsorption.
- The body will be discharged without affecting the use of the liquid, such as oil, dust, etc.
- Depending on the size of the work, the size of the adsorption can be adjusted to make it convenient and practical.
- This product adopts the advanced technology of Germany, the processing workpiece with strong adsorption, it can be processed at the same time.
- Technology have new breakthrough, even if the product has a hole or need hole processing, can also be a strong adsorption, the processing requirements required (tailored for bulk products, and to break the bottleneck of conventional vacuum suction cup can not machining hole).
- Technical advice: processing product size, milling workpiece suggest not less than $100\text{mm} * 100\text{mm}$, grinding workpiece suggest not less than $50\text{mm} * 50\text{mm}$ (not do calibration can be realized the adsorption of smaller size). Gas supply air should not have water and liquid doping, not on a regular basis to clear our product (cleaning frequency depending on the actual usage), clean way: use clean kerosene or cutting fluid in a sucker mesa keyway, turn on the switch to it is in working status, kerosene or cutting fluid through mesa suction hole suction suction cup body, a few times in a row, let chuck will suction liquid kerosene or chip out of the body. (when the temperature is low, use warm water to do the above).

Specifications

Model	A(mm)	B(mm)	C(mm)	(mm)	(mm)	Weight(Kg)
1530	150	300	50	23	12	17
2020	200	200	50	23	12	16
2040	200	400	50	46	24	26
2525	250	250	50	46	24	22
2550	250	500	50	46	24	38
3030	300	300	50	46	24	28
3060	300	600	50	46	24	47
4040	400	400	50	46	24	44
4060	400	600	50	46	24	58

※ Due to technological progress, the content of this volume is for reference only, and the specifications can be customized according to customer needs.

GRINDING WITH STANDARD ELECTROMAGNETIC CHUCK



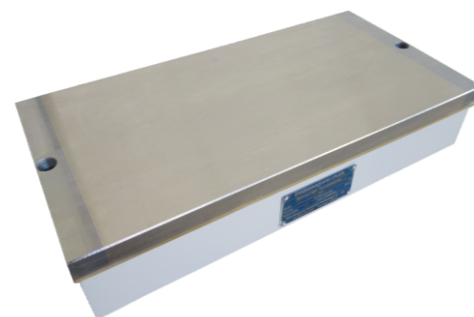
It is used for medium strength grinding and the suction 100N/cm². Strong steel, stable accuracy, and very small thermal variables. Unique coil design. The suction force of the suction disc is very uniform, suitable for surface grinding machine.

Model	Dimension										N.W(kg)	(DCV)	(A)
	A	B	C	D	E	F	G	H	I	J			
MP11-200×630	200	630	30	550	22(4+18)	192	616	20	100	30	90	110	1
MP11-250×250	250	500	30	400	22(4+18)	244	494	20	95	30	86	110	1
MP11-300×600	300	600	30	510	22(4+18)	285	590	20	88	30	120	110	1.1
MP11-300×680	300	680	30	600	22(4+18)	296	730	20	116	30	134	110	1.36
MP11-300×800	300	800	30	730	22(4+18)	296	795	20	116	12	170	110	1.8
MP11-300×1000	300	1000	30	900	22(4+18)	296	990	20	110	12	196	110	2
MP11-320×800	320	800	30	704	22(4+18)	314	790	20	100	12	171	110	1.46
MP11-320×1000	320	1000	30	900	22(4+18)	314	990	20	110	12	232	110	2
MP11-400×800	400	800	30	704	22(4+18)	392	816	20	105	10	213	110	1.45
MP11-400×1000	400	1000	30	904	22(4+18)	392	996	20	105	10	255	110	1.9
MP11-500×1000	500	1000	30	858	22(4+18)	492	1016	20	105	10	387	110	2
MP11-600×1000	600	1000	30	858	22(4+18)	592	1016	20	107	10	432	110	2.4
MP11-800×1000	800	1000	30	858	22(4+18)	795	1026	20	115	15	523	110	3.2
MP11-500×1500	500	1500	30	1372	22(4+18)	492	1490	20	112	15	643	110	5

11

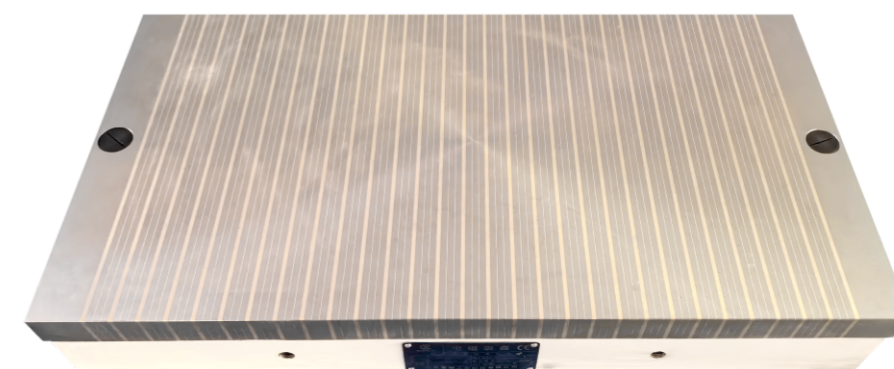
GRINDING WITH FINE ELECTROMAGNETIC CHUCK

Is suitable for the grinding thin little the permeability of the workpiece, fine magnetic separation, magnetic force distribution is very uniform, good processing technology to ensure that the disk panel without interval, the overall solid, can prevent the corrosion of cutting fluid. Prolong the service life of the disk, and guarantee the machining precision of workpiece, the unique coil design, make its thermal variables is small, stable precision. The suction can be 120N/cm².



Model	Dimension										N.W(kg)	(DCV)	(A)
	A	B	C	D	E	F	G	H	I	J			
MPM11-250×500	250	500	22	400	4(3+1)	244	494	20	95	30	86	110	1
MPM11-300×600	300	600	30	510	4(3+1)	285	590	20	88	30	120	110	1.1
MPM11-300×800	300	800	30	730	4(3+1)	296	795	20	116	12	170	110	1.8
MPM11-400×800	400	800	30	704	4(3+1)	392	816	20	105	10	213	110	1.45
MPM11-400×1000	400	1000	30	904	4(3+1)	392	996	20	105	10	255	110	1.9
MPM11-500×1000	500	1000	30	858	4(3+1)	492	1016	20	105	12	387	110	2

MEDIUM ELECTRIC MAGNETIC CHUCK



Applicable to grinding machine. The size workpiece can absorb, the heat deformation is small, the whole sculpture, the precision is high, the magnetic force is even.

Model	A	B	H	Extreme distance	(V)	(A)	(kg)
MPQM11 150×700	150	700	75	3+5+0.5+5+0.5+5	110	0.40	51
MPQM11 200×450	200	450	75	3+5+0.5+5+0.5+5	110	0.62	48
MPQM11 200×500	200	500	75	3+5+0.5+5+0.5+5	110	0.65	53
MPQM11 250×500	250	500	75	3+5+0.5+5+0.5+5	110	1.30	66
MPQM11 300×600	300	600	75	3+5+0.5+5+0.5+5	110	1.20	95
MPQM11 300×700	300	700	75	3+5+0.5+5+0.5+5	110	1.40	115
MPQM11 400×800	400	800	75	3+5+0.5+5+0.5+5	110	1.66	170
MPQM11 400×1000	400	1000	75	3+5+0.5+5+0.5+5	110	2.00	212
MPQM11 500×1000	500	1000	75	3+5+0.5+5+0.5+5	110	2.50	265
MPQM11 600×1500	600	1500	75	3+5+0.5+5+0.5+5	110	4.40	477
MPQM11 600×2000	600	2000	75	3+5+0.5+5+0.5+5	110	6.80	636
MPQM11 200×450	200	450	75	0.5+1.5	110	1.10	46
MPQM11 200×500	200	500	75	1+3	110	1.30	51
MPQM11 250×500	250	500	75	1+3	110	1.70	64
MPQM11 300×600	300	600	75	1+3	110	1.90	94
MPQM11 300×700	300	700	75	1+3	110	2.20	125

※ Due to technological progress, the content of this volume is for reference only, and the specifications can be customized according to customer needs.

12

ROUND TABLE ELECTROMAGNETIC CHUCK

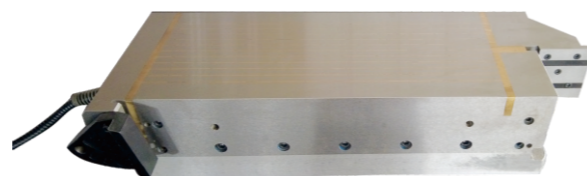


The circular electromagnetic sucker is the main component of the various kinds of surface grinding machine, which can be used for grinding and machining, and the suction force can reach 120N/cm².

Model	Dimension					(A)	(DCV)	N.W(kg)
	A	B	C	D	E			
MP21 500	510	500	100	25	12	1.8	110	137
MP21 630	650	630	130	30	14	1.7	110	260
MP21 780	780	770	180	35	18	4	110	500
MP21 800	800	780	180	35	13	2.5	110	600
MP21 1000	1000	980	156	35	20	4.6	110	1250
MP21 1250	1250	1230	160	35	20	14	110	1450
MP21 1600	1600	1580	160	35	20	15.4	110	1650

GRIND MULTI-FUNCTION POWERFUL ELECTROMAGNETIC SUCKER

Grinding with multifunctional powerful magnetic chuck, strong suction, can reach 150-240N/cm², disk have a collection of disk space on the structure and special function of machine tool bed diffuse the lines of magnetic force, which is the side of the disk, end, end face has the ability of holding tool, using the original permeability special-shaped workpiece positioning, especially suitable for processing and grinding tool use.



Model	Dimensions			Rectifier output (W)	Rated Voltage (V)	Rated Output (W)	Weight (kg)	Overall Dimensions of Gontainer(cm)
	L	W	H					
MP93 300×770	770	300	146	350	110	300	225	113 × 44 × 25
MP93 260×710	710	260	142	255	110	250	170	102 × 41 × 24
MP93 210×550	550	210	138	170	110	140	102	83×30×23
MP93 180×520	520	180	127	170	110	130	78	81×28×22
MP93 125×320	320	125	100	120	110	90	26	55×22×19

POWERFUL ELECTROMAGNETIC CHUCK FOR MILLING MACHINE



For milling machines, moulding machines, planer and turret milling machines, recutting is the most effective. It is very convenient to locate the magnetising workpiece which is not suitable for mechanical clamping. The suction of the whole sucker is very uniform and absorbs 160N/cm². This series of disks is an ideal choice for improving productivity and reducing the intensity of workers' labor. Among them: MP91F series of products prevent milling planer magnetization and improve machining accuracy.

Model	Dimension							N.W(kg)	(DCV)	(A)
	A	B	C	E	F	G	H			
MP91 240×630	240	630	598	25(3+22)	648	20	146	141	110	2.32
MP91 300×680	300	680	635	5(4+25+4+22)	708	20	146	189	110	2.75
MP91 300×800	300	800	745	5(4+25+4+22)	818	20	146	220	110	3.2
MP91 400×800	400	800	732	5(4+25+4+22)	816	18	132	225	110	3.78
MP91 400×1000	400	1000	920	5(4+25+4+22)	1016	18	132	312	110	4.62
MP91 500×1000	500	1000	941	89(32+4+15+4+30+4)	1034	20	142	376	110	5
MP91 500×1200	500	1200	1157	89(32+4+15+4+30+4)	1250	20	142	450	110	6.11
MP91 500×1500	500	1500	1445	89(32+4+15+4+30+4)	1550	20	120	540	110	6.5
MP91 600×1000	600	1000	920	89(32+4+15+4+30+4)	1034	20	120	430	110	5.3
MP91 600×1500	600	1500	1445	89(32+4+15+4+30+4)	1550	20	120	650	110	7
MP91 800×2000	800	2000	1940	89(32+4+15+4+30+4)	2060	20	120	750	110	10

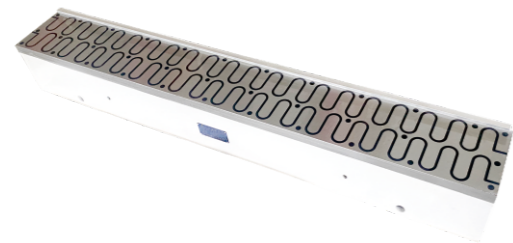
ROTATING ELECTROMAGNETIC CHUCK



Manipulation is suitable for the grinding Angle artifacts, control system, the clamping work convenient, spinning spindle has a scale. But for before and after processing arbitrary Angle adjustment, adjust the Angle for plus or minus 45° disk ontology and rotary spindle, body shaping, ensures enough rigidity, suction of up to 100N/cm². It can be customized for milling and rotary electromagnetic absorption.

Model	Dimension										Overall Length	Overall Height	Voltage	Current	Weight (kg)
	B1	L1	Le	H	P	B2	G	h1	h	L2					
MPD42 100×250	100	250	211	95	22 (19+3)	100	14	91	18	368	145	110	0.10A	21	
MPD42 120×300	120	300	240	95	22 (19+3)	100	14	91	18	418	145	110	0.19A	29	
MPD42 125×250	125	250	211	95	22 (19+3)	100	14	91	18	368	145	110	0.18A	25	
MPD42 150×300	150	300	240	95	22 (19+3)	100	14	91	18	418	145	110	0.14A	37	
MPD42 150×350	150	350	296	95	22 (19+3)	100	14	91	18	468	145	110	0.15A	41	
MPD42 150×450	150	450	408	95	22 (19+3)	100	14	91	18	568	145	110	0.20A	51	
MPD42 200×500	200	500	452	95	22 (19+3)	100	16	120	20	618	170	110	0.34A	76	
MPD42 200×600	200	600	560	95	22 (19+3)	100	16	120	20	718	170	110	0.45A	89	

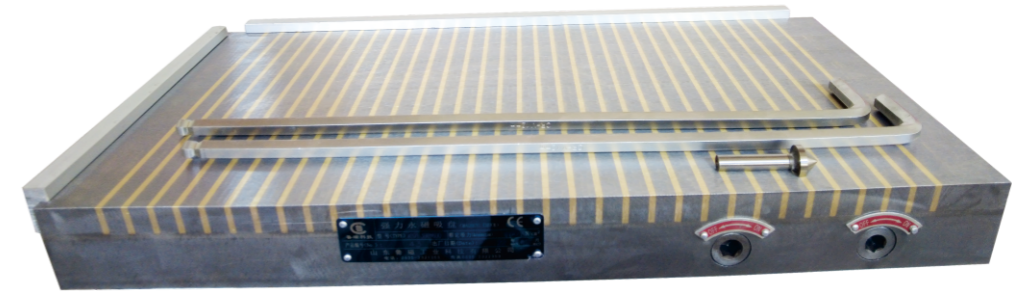
SPECIAL ELECTROMAGNETIC SUCKER FOR GRINDING MACHINE



This series of disks is suitable for use in all kinds of sharpener machines, because it is convenient and fast, accurate and efficient. Can effectively reduce the labor intensity and save the production cost, is of all kinds of woodworking knife sharpener machine, printing machine, the best choice of the shear cutter knife grinder, the suction of up to 120N/cm².

Model	Dimensions (mm)			Rated Voltage(V)	Rated Current(A)	Weight (Kg)
	L	W	H			
MPZ11 160×1680	160	150	110	2	200	
MPZ11 180×1500	180	185	110	2	240	
MPZ11 180×1550	180	180	110	2	240	
MPZ11 190×1680	190	190	110	1.5	295	
MPZ11 190×2200	190	190	110	2	390	
MPZ11 200×1000	200	200	110	1.06	215	
MPZ11 200×1100	200	165	110	1.9	200	
MPZ11 200×1470	200	160	110	1.6	230	
MPZ11 200×1475	200	165	110	2.7	260	
MPZ11 200×1600	200	165	110	2.7	290	
MPZ11 200×1760	200	170	110	1.7	320	
MPZ11 200×2270	200	200	110	2	450	

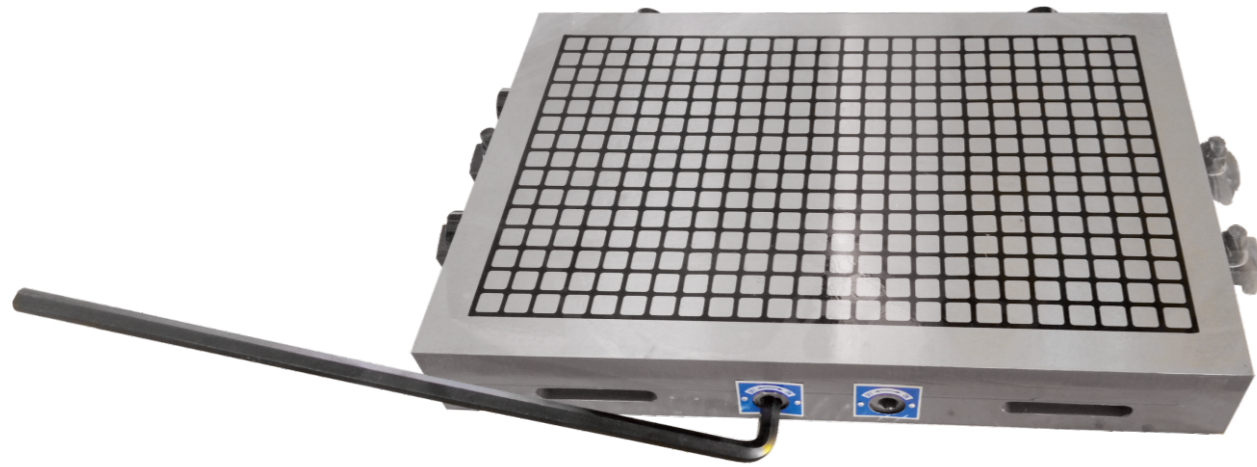
SUPER POWERFUL PERMANENT MAGNETIC CHUCK (CNC SPECIAL)



It is suitable for milling machining of CNC processing machine, precision milling machine, no power supply to disk, and no heat for long use. Disk itself precision is high, can keep the 2 um / 100 mm, fully guarantee of the accuracy of machined part, due to the adsorption of the workpiece without power supply, even if all of a sudden power failure, the artifact will not move the porridge can avoid unnecessary loss. In the case of heavy cutting, the area of the workpiece is not less than 100X100X15mm. Such as smaller than the area of the disk can hold, but we can not achieve the best effect, the unique magnetic circuit design, make the suction not period is large, uniform, high quality magnets, can ensure the long-term stable suction, suction of up to 200N/cm².

British standard	Model	Dimension (mm)							N.W(kg)
		A	B	B1	C	F	G	G1	
8"X8"	MPC91 200×200T	200	200	220	30	12+4	80	25	30
10"X10"	MPC91 250×250T	250	250	270	30	12+4	80	25	45
12"X12"	MPC91 300×300T	300	300	320	30	12+4	80	25	60
14"X14"	MPC91 350×350T	350	350	370	30	12+4	80	25	65
16"X16"	MPC91 400×400T	400	400	420	30	12+4	80	25	85
18"X18"	MPC91 450×450T	450	450	470	30	12+4	80	25	115
20"X20"	MPC91 500×500T	500	500	520	30	12+4	80	25	125

POWERFUL PERMANENT MAGNETIC CHUCK - SQUARE TYPE



Use And Scope

Suitable for machining of metal cutting, CNC machining center, CNC milling machine, grinding machine, etc.

Characteristics

- The magnetic force is produced by high energy material, no time limit, no energy consumption, no heat, environmental protection, simple and practical operation.
- Super absorbent, the magnetic force can be superimposed, and it can be increased by the increase of the contact area of the workpiece, which can be used for force milling and cutting.
- The strong suction panel is rigid and stable, and it can be machined in the process without heat and distortion.
- Simple mechanical switch that does not require a power supply to prevent the loss of the magnetic force from a sudden power failure.
- It can easily replace the workpiece, shorten the workpiece to adjust the working hours, realize the five-sided processing, and greatly increase the efficiency of the work by 80%.

Specifications

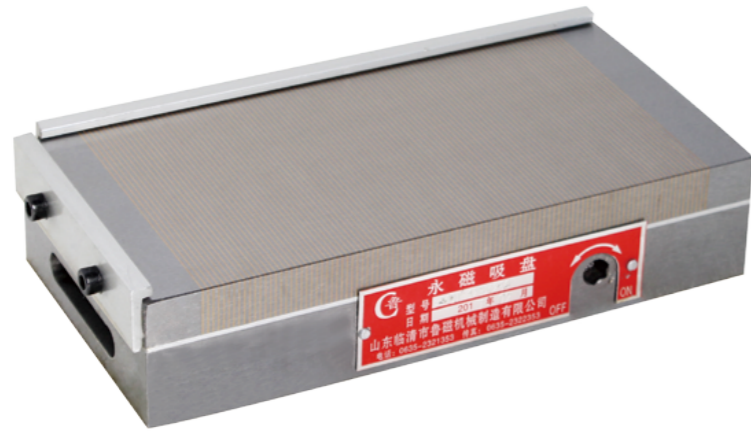
Model	Size (mm)			Magnetic block (piece)	Magnetic force block (kgf)	Total suction (kgf)
	A	B	H			
MPC91 200×250F	200	256	50	56	25	1400
MPC91 200×400F	200	400	80	136		3400
MPC91 250×250F	253	252	90	90		2250
MPC91 300×300F	300	300	90	132		3300
MPC91 300×400F	300	400	90	176		4400
MPC91 300×400F	293	376	60	132		3300
MPC91 300×600F	300	600	90	275		6875
MPC91 300×1000F	300	1000	90	352		8800
MPC91 350×350F	350	350	90	183		4575
MPC91 400×400F	400	400	90	240		6000
MPC91 400×500F	400	500	90	300		7500
MPC91 400×600F	400	600	90	375		9375
MPC91 400×800F	400	800	90	480		12000
MPC91 500×500F	500	500	110	400		10000
MPC91 500×1000F	500	1000	110	800		20000

Application Example



※ Due to technological progress, the content of this volume is for reference only, and the specifications can be customized according to customer needs.

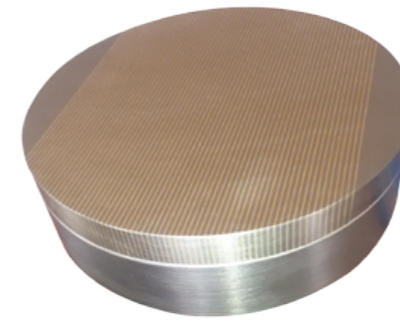
POWERFUL DENSE PERMANENT MAGNETIC CHUCK



Applicable to flat surface grinding machine, spark machine, wire cutting machine tool. The magnetic pole spacing is fine, the magnetic distribution is uniform, and the effect is especially obvious when the small workpiece is processed. The precision of the working table is unchanged when recharging and demagnetizing. The panel is specially treated with no leakage. It can prevent the cutting fluid corrosion and prolong the service life of the disk to work in the cutting fluid for a long time. The six-sided fine grinding process can be used vertically on the wire cutting machine. High performance magnetic steel is used in the disk, which has a strong suction force and has little residual magnetism. The suction can be 100N/cm².

British standard	Model	Dimension									N.W(kg)
		A	B	C	D	E	F	G	I		
4"X7"	MPM91 100x175	100	175	25	20	10	2(0.5+1.5)	45	12	7	
5"X10"	MPM91 125x250	125	250	25	20	10	2(0.5+1.5)	45	12	13	
6"X6"	MPM91 150x150	150	150	25	20	10	2(0.5+1.5)	45	12	9.4	
6"X12"	MPM91 150x300	150	300	25	20	10	2(0.5+1.5)	45	12	19	
6"X14"	MPM91 150x350	150	350	25	20	10	2(0.5+1.5)	45	12	22	
6"X16"	MPM91 150x400	150	400	25	20	10	2(0.5+1.5)	45	12	26	
6"X18"	MPM91 150x450	150	450	25	20	10	2(0.5+1.5)	45	12	29	
8"X16"	MPM91 200x400	200	400	25	20	10	2(0.5+1.5)	45	12	35	
8"X18"	MPM91 200x450	200	450	25	20	10	2(0.5+1.5)	45	12	39	
8"X20"	MPM91 200x500	200	500	25	20	10	2(0.5+1.5)	45	12	43	

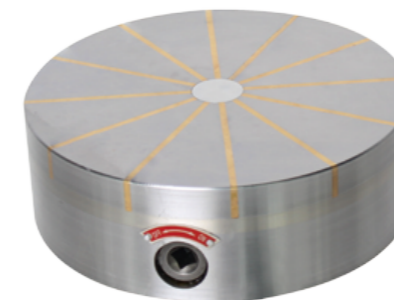
CIRCULAR DENSE PERMANENT MAGNETIC CHUCK



Circular pole permanent magnet plate is suitable for the grinding machine, lathe, bench marking, etc., the holding of magnetic material processing, suction optional 100N/cm².

Model	Dimension (mm)									N.W(kg)
	A	B	C	D	E	G	H	I		
MPM51 125	125	80	2(0.5+1.5)	2	112	M6	20	58	5.3	
MPM51 160	160	115	2(0.5+1.5)	2	140	M8	20	58	8.4	
MPM51 200	200	155	2(0.5+1.5)	2	180	M10	20	58	14	
MPM51 250	250	205	2(0.5+1.5)	2	224	M10	20	58	2.2	
MPM51 300	300	255	2(0.5+1.5)	2	260	M10	20	58	34.5	

THE RADIATION POLE IS A PERMANENT MAGNET

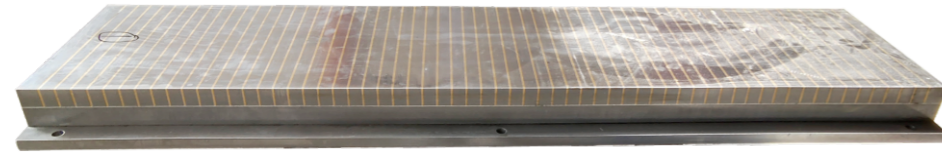


Suitable for small vertical surface grinder, cylindrical grinder, internal grinder grinding, lathe of mild machining. Integral panel structure can keep the disk of high precision, small change, the suction of up to 120N/cm².

Model	Dimension (mm)								N.W(kg)
	D	D ₁	D ₂	K	M	h	H		
MP51 125	125	80	110	4	M8	20	54	5.3	
MP51 160	160	120	140	4	M8	20	54	8.4	
MP51 200	200	160	180	4	M10	20	60	14	
MP51 250	250	200	224	4	M10	20	60	22	
MP51 300	300	230	260	4	M10	20	60	39	

※ Due to technological progress, the content of this volume is for reference only, and the specifications can be customized according to customer needs.

ULTRA-THIN PERMANENT MAGNETIC CHUCK



Applicable to projectors, spark machining. High speed microcutting. Base structure of the village of stainless steel material manufacturing, but long-term rust corrosion resistance, can waterproof sealing structure, the overall height only 22 mm, can maximum extension equipment working height.

Model	(length × width)	Base size			Magnetic pole interval	N.W(kg)
		L1	Le	L2	P	
MPB41 70×175	175 × 70	175	122	185	10(8+2)	2.9
MPB41 70×130	130 × 70	130	77	140	10(8+2)	2.2
MPB41 150×300	300 × 150	300	245	310	10(8+2)	8

HIGH PRECISION INTEGRAL SINE PERMANENT MAGNET CHUCK

One-piece sinusoid is a simple and highly accurate tool. The disk copper is only 1.5 mm for the small work. The height below the normal sinusoidal disk is more convenient, the suction can reach 100N/cm².



Model	Dimension (mm)						Grinding angle	N.W(kg)
	A	B	C	D	E	P		
MPMT42 100×175	225	102	85	75	44	2(0.5+1.5)	0-45°	11.5
MPMT42 150×150	200	152	85	100	44	2(0.5+1.5)	0-45°	14.8
MPMT42 125×250	305	252	85	100	44	2(0.5+1.5)	0-45°	21
MPMT42 150×300	355	152	85	100	44	2(0.5+1.5)	0-45°	28

SINGLE-TILT SINE DENSE POLE PERMANENT MAGNETIC CHUCK

Suitable for grinding in high precision Angle. No change in the precision of the working mesa when recharging and demagnetization. The panel is specially treated. There is no leakage to prevent corrosion of cutting liquid and prolong the service life of the disk. The dense structure can absorb smaller parts and can absorb 100N/cm².



Model	Dimension (mm)						Grinding angle	N.W(kg)
	A	B	C	D	E	F		
MPM42 100×175	100	175	85	75	53	2(0.5+1.5)	0-45°	11.5
MPM42 150×250	125	250	85	75	53	2(0.5+1.5)	0-45°	14.8
MPM42 150×150	150	150	85	100	53	2(0.5+1.5)	0-45°	21
MPM42 150×300	150	300	85	100	53	2(0.5+1.5)	0-45°	28

LONGITUDINAL SINGLE-DIP SINUSOIDAL PERMANENT MAGNETIC CHUCK

Apply to grinding left and right Angle. Grinding Angle 0-45°, widely used in all kinds of tools grinding machine, machine tool assembly, suction can reach 100N/cm².

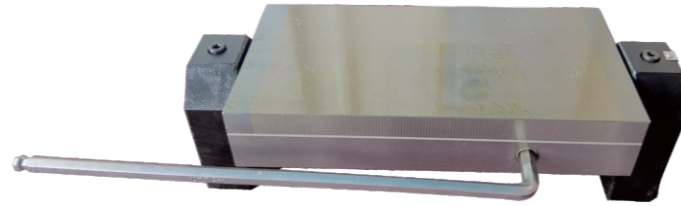


Model	Dimension (mm)				Magnetic pole interval	N.W(kg)
	A	B	C	D		
MPL42 100×175	175	100	110	75	2 (1.5+0.5)	12
MPL42 150×300	300	150	110	75	2 (1.5+0.5)	35
MPL42 150×400	400	150	110	100	2 (1.5+0.5)	43

※ Due to technological progress, the content of this volume is for reference only, and the specifications can be customized according to customer needs.

TILTING (ROTATING) DENSE PERMANENT MAGNETIC CHUCK

Suitable for grinding in high precision Angle. The rotating main shaft has Angle scale, can be done before and after the Angle of grinding, the Angle of the Angle can be adjusted and the Angle of 45°, the strength is high, the body is a body in the rotation main shaft. No change in the precision of the working mesa when recharging and demagnetization. The panel is specially treated, no leakage, which prevents the cutting fluid and prolong the service life of the disk. The dense structure can absorb smaller parts and can absorb 100N/cm².



Model	Dimension													N.W(kg)
	A	B	C	D	E	F	G	I	J	K	L	M	N	
MPH42 100×175	100	175	135	100	2(0.5+1.5)	295	50	50	14	103	50	163	100	18.5
MPH42 125×250	125	250	250	100	2(0.5+1.5)	370	50	50	14	103	50	163	100	25
MPH42 150×150	150	150	150	100	2(0.5+1.5)	270	50	50	14	103	50	163	100	21
MPH42 150×300	150	300	300	100	2(0.5+1.5)	420	50	50	14	103	50	163	100	31

PRECISION DOUBLE DIP PERMANENT MAGNETIC CHUCK



Suitable for grinding in high precision Angle. Can be machined before, after or left, right Angle grinding, before, after, or left, right, 0-45° adjustable. No change in the precision of the working mesa when recharging and demagnetization. The panel is specially treated, no leakage, which prevents the cutting fluid and prolong the service life of the disk. The dense structure can absorb smaller parts and can absorb 100N/cm².

Model	Dimension (mm)						Grinding angle	N.W(kg)
	A	B	C	D	E	F		
MPM43 100×175	100	175	131	75	100	2(0.5+1.5)	0-45°	15
MPM43 125×250	125	250	131	75	150	2(0.5+1.5)	0-45°	25
MPM43 150×150	150	150	131	100	100	2(0.5+1.5)	0-45°	18
MPM43 150×300	150	300	131	100	150	2(0.5+1.5)	0-45°	45

RIGHT-ANGLE PERMANENT MAGNETIC CHUCK

Product introduction

Application scope:

Line with a rectangular magnetic chuck is suitable for the cutting Angle and speed wire machine, the positive and negative magnetic table with base parallelism and perpendicularity accurate, very convenient to work after an effective tight absorption can handle three vertical plane, can one-time master pieces or one-time processing several small workpieces, convenient and quick. NYN406 right Angle type magnetic by the original factory, the positive and negative magnetic table with base parallelism and perpendicularity control within 0.003 mm, very convenient artifacts after an effective tight absorption can be three vertical plane, smaller artifacts can be used with a gauge block or shim underlay.

Special specifications can be customized.

It is extremely wear-resisting with chromium steel heat treatment 60 degrees.



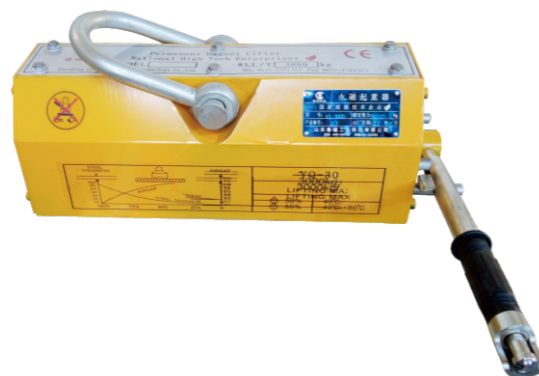
Specifications and models

Model	Dimension		
	leight	width	height
MPMZ91 100×100	100	100	100
MPMZ91 150×150	150	150	150
MPMZ91 150×200	150	200	200
MPMZ91 150×250	150	250	250
MPMZ91 150×300	150	300	300
MPMZ91 150×400	150	400	400

※ Due to technological progress, the content of this volume is for reference only, and the specifications can be customized according to customer needs.

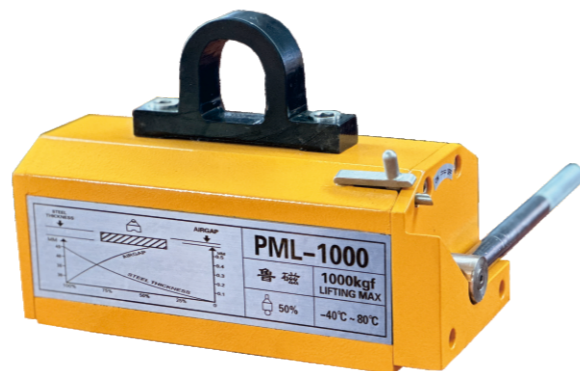
PERMANENT MAGNET LIFTER

Use high performance magnetic material to make it smaller, lighter and hold strong. Unique magnetic design, the residual magnetism is almost zero. The safety factor is high, and the maximum pull force is 3.5 times the rated gravity. The handle switch has safety button, which can be operated by single hand and is safe. The bottom surface of the lifting machine has "V" groove design, the corresponding round steel of the crane, the steel plate. Without electricity, the magnetic force lasts long and USES safety. Work in the field. It is widely used for lifting and lifting of children's steel, flat mechanical parts and the installation and handling of all kinds of molds.



Use And Scope

Used for lifting the iron objects. Widely used in mechanical processing, engineering machinery, mould manufacturing industry of the ship.



Small structure, light weight, easy to operate.

No need to use electricity, magnetism is constant, use safety, can be in the field homework.

The safety factor is high, the maximum pulling force is 3-3.5 times, the insurance device, prevent the wrong operation.

No maintenance design, long service life.

"V" groove design, can absorb a plane or the circular arc piece.

Model	Rated Lifting	Dimension (mm)				Max Breakaway	Force N.W(kg)
		A	B	C	D		
MPYQ 100	100	90	63	68	145	350	3
MPYQ 400	400	160	95	180	160	1400	11
MPYQ 600	600	220	115	125	230	2100	22
MPYQ 1000	1000	260	145	145	280	3500	40
MPYQ 2000	2000	340	160	165	410	7000	60
MPYQ 3000	3000	420	185	185	510	10500	90
MPYQ 5000	5000	580	300	300	650	17500	400

AUTOMATIC PERMANENT MAGNET LIFTER



It is widely used for the lifting and lifting of mechanical parts and steel, which can be widely used in the mould and machinery manufacturing industries. Such as mechanical equipment manufacturing plant, processing center, shipyard and other areas involving steel. It can be used for lifting steel plate, cast iron, steel, and can be used for lifting and transporting scrap steel and scrap iron, which can be used in single stage, and can be used to carry large and long ferromagnetic material.

Characteristics

It adopts the high performance permanent magnet material nd-ti-boron to make the product kernel, makes the product volume is

smaller, the lifting load is stronger, and the magnetic force is enduring.

The product has a safety factor of up to three times that of gravity.

This product can absorb the workpiece, such as plate plate, casting, section, etc., and the thickness of the workpiece is only 4mm.

The steel plate can reach up to 30 meters in length and can reach up to 50 tons.

The product can be used without electricity, which saves power.

There is no need for the operator to pull the handle switch. The jack will complete the action of holding and releasing the work.

The optimized magnetic circuit design makes the residual magnetism almost zero.

model	Rated lifting weight (kg)	Max pull-off force (kg)	leigth (mm)	width (mm)	height (mm)	weight (kg)
MPHC-1	1000	3500	595	490	110	230
MPHC-2	2000	7000	780	540	110	320
MPHC-3	3000	10500	840	600	110	400
MPHC-5	5000	17500	1056	708	130	600

※ Due to technological progress, the content of this volume is for reference only, and the specifications can be customized according to customer needs.